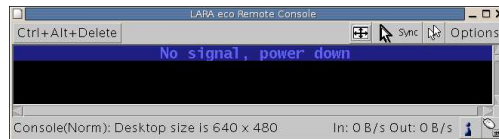


Remote Console

The Remote Console is the redirected screen, keyboard and mouse of the remote host system where the LARA eco is installed. The web browser which is used for accessing the LARA eco has to supply a Java Runtime Environment version 1.1 or higher. However, we strongly recommend to install Sun JVM 1.4. The Remote Console will behave exactly the same way as if you were sitting directly in front of the screen of your remote system. That means that both the keyboard and mouse can be used in the usual way. Open the console by clicking the preview picture on the main site of the HTML frontend. The picture below shows the top of the Remote Console.



There are some options to choose from the menu, the important ones are the following:



Auto Adjust Button

If the video displayed is of bad quality or distorted in some way, press this button and wait a few seconds while the LARA eco tries to adjust itself for the best possible video quality.



Sync Mouse

Choose this option in order to synchronize the local with the remote mouse cursor. This is especially necessary when using accelerated mouse settings on the host system. In general, there is no need to change mouse settings on the host.*)

Video Settings in Options Menu

This opens a new window with elements to control the LARA eco Video Settings. You can change some values, for instance related to brightness and contrast of the picture displayed, which may improve the video quality.

*) **Note:** At first start, if the local mouse pointer is not synchronized with the remote mouse pointer, press the Auto Adjust Button once.

Configuration via Serial Interface

Connect the enclosed Null Modem Cable to the serial interface with the black connector on the rear side. The serial interface needs to be adjusted with the parameters as shown below.

Parameter	Bits/second	Data bits	Parity	Stop bits	Flow control
Value	115200	8	No	1	none

Use a terminal software (e.g. `hyperterm` or `minicom`) to connect to the LARA eco. Reset the LARA eco, and immediately press the "ESC" key. You will see some device information, and a "=>" prompt. Enter the command "config", and press the "ENTER" key. Quite soon afterwards you are asked to adjust the IP auto configuration, the IP address, the net mask, and the default gateway. Pressing the "ENTER" key without entering values does not change settings. The gateway value has to be set to 0.0.0.0 (for no gateway) or any other value for the IP address of the gateway. After the confirmation the LARA eco performs a reset using the new values as set before.

LARA eco

Quick Start Guide

Based on firmware 04.00.01
Last revision: 2nd March 2005



We do not ship a printed manual on default. For detailed information please refer to the electronic manual provided as PDF file on the enclosed CD ROM. If you like to obtain a printed version of the manual, do not hesitate to send an email to sales@peppercon.com in order to receive your printed copy.

Copyright © 2004-2005 Peppercon AG, Zwickau (Saxony)
<http://www.peppercon.com>

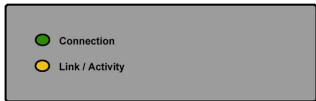
Installation

The LARA eco redirects local keyboard, mouse and video data to a remote administration console. All data is transmitted with the TCP/IP protocol family. The LARA eco can be used in a multi-administrator and multi-server environment as well. Combining the LARA eco with a KVM switch allows to access multiple servers over one single remote console:

1. Connect the KVM cable (2xPS/2, Video, USB) to the according connectors on the LARA eco.
2. Connect the (purple) PS/2 Keyboard jack to the keyboard connector of the host system.
3. Connect the (green) PS/2 mouse plug to the mouse connector of the host system.
4. Connect the VGA HD-15 connector to the VGA monitor output of the host system.
5. Connect the USB jack to the USB socket of the host system.
6. Connect the power supply as well as the Ethernet and/or modem. This depends on your desired access to the LARA eco.

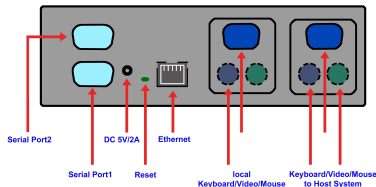
Front Side Indicators

- Connection
This LED indicates that the basic system hardware is working properly.
- Link / Activity
Indicates the Ethernet connection activity.



Rear Side Connectors

- SUB-D9 Serial 1
This standard serial connector is used for the initial configuration, the serial output for a modem dial-in connection and the external power management (optional).
- SUB-D9 Serial 2
External power via Inline Power Module IPM 220-L (optional).
- Reset
This button is used to perform a reset of the LARA eco and is important for the initial configuration.
- Power Supply
A power supply with the parameters Voltage 5V and Current ≥ 2 A has to be attached.
- RJ45 Ethernet
UTP3/5 cables may be used to connect the LARA eco to an Ethernet LAN.
- KVM to host
The controlled system may be connected with the supplied cable that consists of an HD-15 connector for VGA, two PS/2 connectors for both keyboard and mouse and an USB connector to communicate with USB devices.
- KVM local
To connect a local console to the host system besides the LARA eco attach a monitor, a keyboard and a mouse.

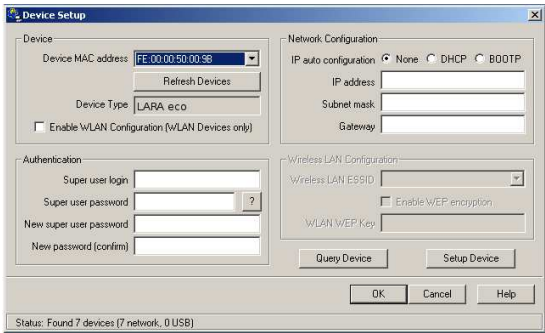


Initial Network Configuration

Initially, the LARA eco network interface is configured with the parameters shown here:

Parameter	IP auto configuration	IP address	Net mask	Gateway	IP access control
Value	DHCP	-	255.255.255.0	none	none

If this initial configuration does not meet your local requirements, use the setup tool to adjust the values to your needs. The setup tool requires an MS Windows NT based OS and can be found on the CD ROM delivered with this package. You can follow the procedure described below. For other OS you may either use the web frontend or configure the LARA eco via serial console. Start the setup tool from the CD ROM on the computer that the LARA eco is installed. A window opens as seen below:



On the upper left corner, the MAC address of the LARA eco is displayed. To detect the MAC address manually, press the button "Refresh Devices". The displayed MAC address is the same MAC address printed on the white sticker placed on the back of the LARA eco. If the LARA eco is connected via USB, it is classified as an USB device and an appropriate drive letter is chosen for this device.

On the lower right corner of the window, there are two buttons: "Query Device" and "Setup Device". Press the "Query Device" button to display the preconfigured values of the network configuration. The values are displayed in the text fields located above. If necessary, adjust the network settings to your needs. To save the changes enter an user name and an according password. Then press the "Setup Device" button. To close the window and accept the changes, press the "OK" button, otherwise "Cancel".

Web Interface

The LARA eco may be accessed using a standard Java enabled web browser. You may use the HTTP protocol or a secure encrypted connection via HTTPS. Just enter the configured IP address of the LARA eco into your web browser. The initial login settings are:

Login: *super*, Password: *pass*

Changing these settings to user specific values is strongly recommended and can be done on the User Settings page.